



## Installation Instructions

For easy installation, you will need to:

- READ ALL the instructions completely before beginning.
- Have the necessary tools available

Tools required:

- 2 - 3/4" wrenches
- 2 - 1/2" wrenches
- 1 - C-clamp

**SAFETY NOTICE:** WE RECOMMEND THAT THIS INSTALLATION BE DONE BY A PROFESSIONAL OR PERSONS WITH SOUND MECHANICAL KNOWLEDGE.

**SUPERSPRINGS** are designed to work in conjunction with original equipment (factory) springs only. Please consult SuperSprings factory (866-898-0720) if original springs have been replaced with an after-market product.

**WARNING:** These instructions are meant to be a general guide for installing SuperSprings. SuperSprings International assumes no liability for the actual installation process. Consumers should apply common automotive safety practices when raising and working on any vehicles. Do NOT put yourself in a position where if the vehicle should move unexpectedly, you may be seriously hurt. SuperSprings are designed to improve vehicle carrying capacity and road handling. Do NOT load any vehicle beyond the manufacturer's specifications.

### LIMITED WARRANTY

See separate warranty information page.

SuperSprings International Corporation  
5055 Sixth Street, Carpinteria, CA 93013  
www.supersprings.com

Technical Support: 866-898-0720  
Email: gerry@supersprings.com

### ***Prior to installation ensure the following steps have been taken:***

*Vehicle must be on level solid surface.*

*Parking brake ON - Ignition OFF.*

*Place blocks in front and rear of the front tires to prevent the vehicle moving.*

### ***During and / or after installation***

*Ensure emergency brake cables are not touching the SuperSprings blade(s). Secure them out of the way with zip ties or by re-routing. Avoid all air conditioning lines, all fuel filler hoses and all brake lines or cables.*

Installation Instructions  
SuperSprings Model: SSA28  
Ford F-150 (2009~Present)

Front / Rear

The SSA28 springs do have a specific left or right. Install springs with bolt threads facing outward. The springs do have a front and rear. The square shackle with the single hole will be placed toward the front of the vehicle. The website includes detail color images at: [http://www.supersprings.com/supersprings\\_installation.asp](http://www.supersprings.com/supersprings_installation.asp)

**Step 1: Positioning the vehicle:**

Vehicle must be on level solid surface.

Ensure emergency brake is ON and Ignition is OFF.

Place blocks in front and rear of the front tires to prevent the vehicle moving.

**Step 2: Jacking up vehicle:**

Place the jack on chassis/frame member - not the axle or differential.

Raise one or both sides of vehicle so that rear wheel(s) is slightly off the ground.

Support vehicle with jack stands.

You may remove the wheel for easier installation access but it is not required.

**Step 3: Position the poly spring pad (PSP-1) on top of the centre spring plate with the molded face facing down and smooth face facing up. Slip SuperSpring over the wheel or slide in from behind, and position it on top of the pad.**



PSP-1

**Step 4: Attach front shackle:**

Slip SuperSpring through wheel well or slide in from behind vehicle with the single hole shackle to the front.

Ensure all A/C lines and brake cables that might be damaged by SuperSpring blades are clear.

Attach bolt on shackle using both polypropylene (black) rollers and steel rollers. Don't over-tighten nuts.

**Step 5: Attach rear shackle:**

Use C-Clamp and pull down rear shackle. Some installations will not require use of clamp.

Where additional lift or clearance is required, use shackle upper bolt hole.

All other cases use lower bolt hole.

Attach bolt on back shackle (as in #4 above) and tighten. Don't over-tighten nuts.

**NEVER TIGHTEN TOP BOLTS ON ANY OF THE SHACKLES.**

**Step 6: Check final alignments**

Note: Springs do not have to be centered over axle.

Position springs shackles to provide rear rollers with  $\frac{3}{4}$ " to 1" forward clearance from any obstacles.

Front rollers only require  $\frac{1}{4}$ " clearance in either direction.

Recheck that no A/C lines or brake cables will be interfered with by the vertical travel of the SuperSprings.

**Step 7:** Repeat the same process on the other wheel.

**Step 8:** Lower the vehicle and remove jack and blocks.

**Step 9: Recheck installation to ensure that all a/c lines, brake cables and truck frame will not interfere with the vertical travel of the SuperSprings.**

Installation Instructions  
SuperSprings Model: SSA28 for Nissan NV

Front / Rear

This spring set does not have a specific left or right. Unless specified otherwise install springs with bolt threads facing outward. The springs do have a front and rear. For Nissan NV installations the square shackle with the single hole will be placed toward the rear of the vehicle.

**Step 1: Positioning the vehicle:**

Vehicle must be on level solid surface.

Ensure emergency brake is ON and Ignition is OFF.

Place blocks in front and rear of the front tires to prevent the vehicle moving.

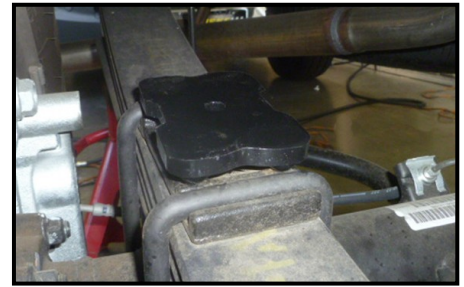
**Step 2: Jacking up vehicle:**

Place the jack on chassis/frame member - not the axle or differential.

Raise one or both sides of vehicle so that rear wheel(s) is slightly off the ground.

Support vehicle with jack stands.

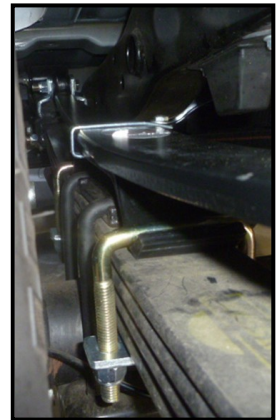
You may remove the wheel for easier installation access but it is not required



PSP-1

**Step 3:** For the Nissan 1500 position the poly spring pad (PSP-1) on top of the centre spring plate with the molded face facing down and smooth face facing up. For the Nissan 2500/3500 install the MTKT mounting kit over the center spring plate.

Slip SuperSpring over the wheel or slide in from behind, install with the single hole shackle to the rear and position the spring on top of the pad or mounting kit.



MTKT

**Note:** Springs do not have to be centered over axle. Check our website for detail installation images:

[http://www.supersprings.com/Application\\_Flyers/SSA28~Nissan~NV~1500.jpg](http://www.supersprings.com/Application_Flyers/SSA28~Nissan~NV~1500.jpg)

[http://www.supersprings.com/Application\\_Flyers/SSA28~Nissan~NV~2500\\_3500.jpg](http://www.supersprings.com/Application_Flyers/SSA28~Nissan~NV~2500_3500.jpg)

**Step 4: Attach front shackle**

Ensure all A/C lines and brake cables that might be damaged by SuperSpring blades are clear.

Thread roller bolt from inside outward with nut to the outside.

Make sure front shackle includes both polypropylene (black) roller and steel roller.

Don't over-tighten roller bolt nut.

**Step 5: Attach rear shackle:**

Use C-Clamp and pull down front shackle.

Attach bolt on back shackle (as in #4 above) and tighten. Don't over-tighten nuts.

**NEVER TIGHTEN TOP BOLTS ON ANY OF THE SHACKLES.**

**Step 6: Check final alignments**

Position springs shackles to provide rear rollers with  $\frac{3}{4}$ " to 1" forward clearance from any obstacles.(toward the axle)

Front rollers only require  $\frac{1}{4}$ " clearance in either direction.

Recheck that no A/C lines or brake cables will be interfered with by the vertical travel of the SuperSprings.



Rear shackle position

**Step 7:** Repeat the same process on the other wheel.

**Step 8:** Lower the vehicle and remove jack and blocks.

**Step 9: Recheck installation to ensure that all a/c lines, brake cables and truck frame will not interfere with the vertical travel of the SuperSprings.**