



## Installation Instructions

For easy installation, you will need to:

- READ ALL the instructions completely before beginning.
- Have the necessary tools available

Tools required:

- 2 - 3/4" wrenches
- 2 - 1/2" wrenches
- 1 - C-clamp

**SAFETY NOTICE:** WE RECOMMEND THAT THIS INSTALLATION BE DONE BY A PROFESSIONAL OR PERSONS WITH SOUND MECHANICAL KNOWLEDGE.

**SUPERSPRINGS** are designed to work in conjunction with original equipment (factory) springs only. Please consult SuperSprings factory (866-898-0720) if original springs have been replaced with an after-market product.

**WARNING:** These instructions are meant to be a general guide for installing SuperSprings. SuperSprings International assumes no liability for the actual installation process. Consumers should apply common automotive safety practices when raising and working on any vehicles. Do NOT put yourself in a position where if the vehicle should move unexpectedly, you may be seriously hurt. SuperSprings are designed to improve vehicle carrying capacity and road handling. Do NOT load any vehicle beyond the manufacturer's specifications.

### LIMITED WARRANTY

See separate warranty information page.

SuperSprings International Corporation  
5055 Sixth Street, Carpinteria, CA 93013  
www.supersprings.com

Technical Support: 866-898-0720  
Email: gerry@supersprings.com

### ***Prior to installation ensure the following steps have been taken:***

*Vehicle must be on level solid surface.*

*Parking brake ON - Ignition OFF.*

*Place blocks in front and rear of the front tires to prevent the vehicle moving.*

### ***During and / or after installation***

*Ensure brake cables are not touching the SuperSprings blade(s). Secure them out of the way with zip ties or by re-routing. Avoid all air conditioning lines, all fuel filler hoses and all brake lines or cables.*

Installation Instructions  
SuperSprings Model # SSA12

Front / Rear

The SSA12 springs do have a specific left or right. Unless specified otherwise install springs with bolt threads facing outward. The springs do have a front and rear. Please check the SuperSprings website or application sheet for your vehicle front/back configuration. The SuperSprings website includes detail color installation images at: [http://www.supersprings.com/supersprings\\_installation.asp](http://www.supersprings.com/supersprings_installation.asp)

**Step 1: Positioning the vehicle:**

Vehicle must be on level solid surface. Ensure emergency brake is ON and Ignition is OFF.  
Place blocks in front and rear of the front tires to prevent the vehicle moving.

**Step 2: Jacking up vehicle:**

Place the jack on chassis/frame member - not the axle or differential.  
Raise one or both sides of vehicle so that rear wheel(s) is slightly off the ground. Support vehicle with jack stands.  
You may remove the wheel for easier installation access but it is not required.

**Step 3: Chevy/GMC/Dodge without factory top overloads require a mounting kit for installation. Chevy/GMC 2500/3500 will need MXKT mounting kit with extended u-bolts. Dodge applications use MTKT. F-250/350 with GVWR >7500 lbs do not require a mounting kit:**

Place mounting bracket (from separate white box) on top of the factory springs directly above axle.

Attach mounting bracket to factory springs; securely tighten U-bolts with hardware supplied.

Slip SuperSpring through wheel well or slide in from behind vehicle, positioning it above mounting kit. (Fig. 1)

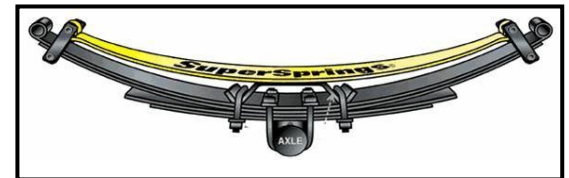


Fig. 1

**Step 4: Where factory springs are above axle and Poly Spring Pad (PSP) is used:**

Place PSP flat side up, centered on U-bolt retainer plate. (Fig. 2)

Factory U-bolts facing up or down has no effect on this installation.

Slip SuperSpring through wheel well or slide in from behind vehicle, positioning above PSP. (Fig. 3)

**Note:** Springs do not have to be centered over axle or on the mounting kit.

Position springs shackles to provide rear rollers with  $\frac{3}{4}$ " to 1" forward clearance from any obstacles. Front rollers only require  $\frac{1}{4}$ " clearance in either direction.

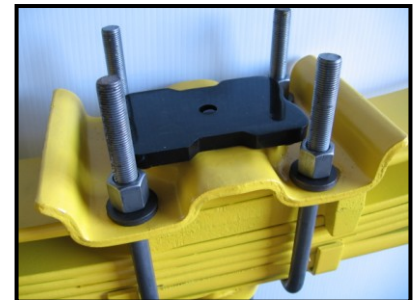


Fig. 2

**Step 5: Attach front shackle:**

Ensure all A/C lines and brake cables that might be damaged by SuperSpring blades are clear. Where additional lift or clearance is required, use shackle upper bolt hole. All other cases use lower bolt hole.\* Attach bolt on front shackle using both polypropylene (black) rollers and steel rollers.

**Step 6: Attach rear shackle:**

Use C-Clamp and pull down rear shackle. Some installations will not require use of clamp. Attach bolt on back shackle (as in #5 above) and tighten.\*  
**NEVER TIGHTEN TOP BOLTS ON ANY OF THE SHACKLES.**



Fig. 3

**Step 7: Install Hold-down Clamp**

Lower the vehicle to the ground to compress the springs onto the mounting bracket. Clamp does not have to be centered on spring.

Slide clamp over SuperSpring and under mounting bracket. Install with the bolts holes away from tire.

Attach bolt, washer and nut and secure tightly with wrench.

**Step 8: Recheck that no A/C lines or brake cables will be interfered with by the vertical travel of the SuperSprings.**

**Step 9: Repeat the same process on the other wheel.**

**Step 10: Lower the vehicle and remove jack and blocks.**

**Step 11: SECURELY RETIGHTEN ALL MOUNTING KIT U-BOLT NUTS.**

Installation Instructions  
SuperSprings Model # SSA12~Nissan NV 2500/3500

Front / Rear

The SSA12 springs do have a specific left or right. Unless specified otherwise install springs with bolt threads facing outward. The springs do have a front and rear. Install the square shackle to the rear in this installation. The SuperSprings website includes detail color installation images at: [http://www.supersprings.com/supersprings\\_installation.asp](http://www.supersprings.com/supersprings_installation.asp)

**Step 1: Positioning the vehicle:**

Vehicle must be on level solid surface. Ensure emergency brake is ON and Ignition is OFF. Place blocks in front and rear of the front tires to prevent the vehicle moving.

**Step 2: Jacking up vehicle:**

Place the jack on chassis/frame member - not the axle or differential.

Raise one or both sides of vehicle so that rear wheel(s) is slightly off the ground. Support vehicle with jack stands.

You may remove the wheel for easier installation access but it is not required.

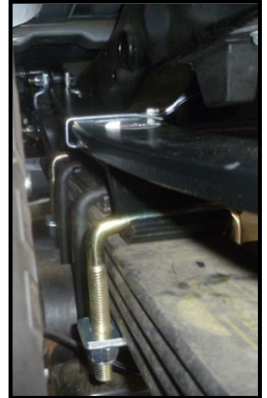


Fig. 1

**Step 3: Place mounting bracket (from separate white box) on top of the factory springs directly above axle.**

Attach mounting bracket to factory springs; securely tighten U-bolts with hardware supplied. (Fig. 1)

With the square shackle to the rear, slip the SuperSpring through wheel well or slide in from behind vehicle, positioning it above mounting kit.



Fig. 2

**Step 4: Attach rear shackle:**

Ensure all A/C lines and brake cables that might be damaged by SuperSpring blades are clear.

Where additional lift or clearance is required, use shackle upper bolt hole.

Attach bolt on front shackle using both polypropylene (black) rollers and steel rollers. (Fig. 2)

**Step 5: Attach front shackle:**

Compress end of spring and place in position under the body mount bracket for correct placement of spring. (Fig. 3)

Use C-Clamp and pull down front shackle.

Attach bolt on back shackle (as in #4 above) and tighten.\* (Fig. 4)

**NEVER TIGHTEN TOP BOLTS ON ANY OF THE SHACKLES.**



Fig. 3

**Step 6: Install Hold-down Clamp**

Lower the vehicle to the ground to compress the springs onto the mounting bracket.

Clamp does not have to be centered on spring.

Slide clamp over SuperSpring and under mounting bracket.

Install with the bolts holes away from tire.

Attach bolt, washer and nut and secure tightly with wrench.

**Step 7: Recheck that no A/C lines or brake cables will be interfered with by the vertical travel of the SuperSprings.**

**Step 8: Repeat the same process on the other wheel.**

**Step 9: Lower the vehicle and remove jack and blocks.**

**Step 10: SECURELY RETIGHTEN ALL MOUNTING KIT U-BOLT NUTS.**



Fig.4