

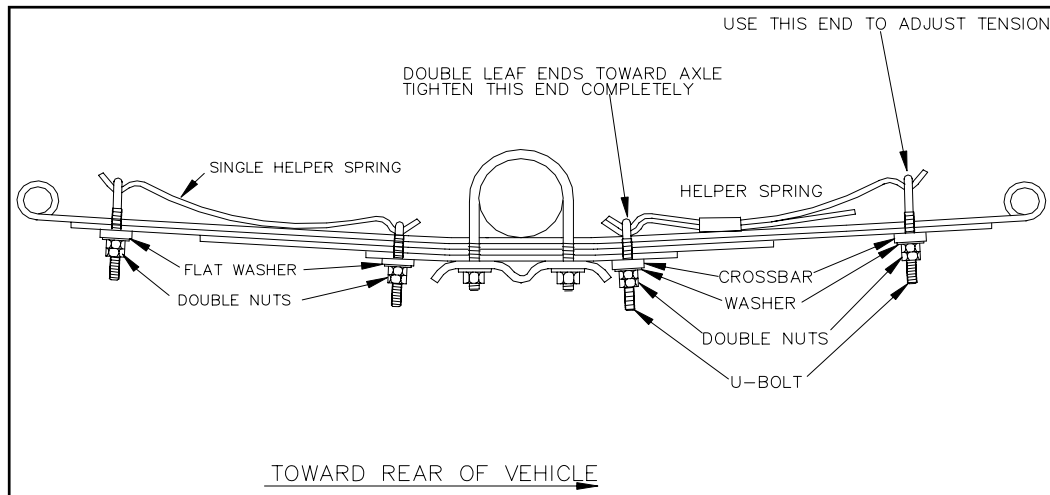
Hellwig PRODUCTS.com

559-734-7451 800-367-5480 FAX 559-734-7460

INSTALLATION INSTRUCTIONS

Thank you for purchasing a quality Hellwig Product.

PLEASE READ THIS INSTRUCTION SHEET COMPLETELY BEFORE STARTING YOUR INSTALLATION



TORQUE TABLE

BOLT SIZE: 3/8" = 20-30 ft. lbs. - 7/16" = 35-45 ft. lbs. - 1/2" = 50-70 ft. lbs. - 9/16" = 70-90 ft. lbs.

SAFETY: BEFORE STARTING YOUR INSTALLATION, BE SURE TO SET PARKING BRAKE AND CHOCK TIRES.

IMPORTANT NOTE: HELLWIG HELPER SPRINGS ARE DESIGNED TO INCREASE THE "LEVEL LOAD" CARRYING CAPACITY OF YOUR VEHICLE. NEVER LOAD THE VEHICLE THAT THIS UNIT IS BEING INSTALLED ON BEYOND THE MANUFACTURER'S MAXIMUM GROSS VEHICLE WEIGHT RATING.

NOTICE: DO NOT ATTEMPT TO INSTALL THIS UNIT ON CERTAIN YEARS OF HCHEVY/GMC ASTRO VANS. FORD RANGERS AND MAZDA B3000 PICKUP, OR ANY VEHICLE WITH PLASTIC COMPOSITE LEAF SPRING.

DO NOT: ATTEMPT TO INSTALL THIS UNIT ON JEEP CHEROKEE MINI WAGON, DUE TO CLEARANCE AND SPRING HEIGHT. THIS UNIT MAY COME INTO CONTACT WITH THE UNDERCARRIAGE PANELS AND CAUSE DAMAGE WHILE THE VEHICLE IS IN MOTION. RECOMMENDED UNIT FOR THIS VEHICLE IS PART NUMBER: 203323 OR EZ550. FOR ADDITIONAL INFORMATION CALL: 1-800-367-5480

1. Jack up vehicle by the frame just until the tires are ready to leave the ground. Be sure that the vehicle is on a flat hard surface, use tire blocks and safety stands.
2. Place the accessory springs on top of the vehicle's springs as per drawing. On some vehicles it may be necessary to bend or remove the vehicle's spring keepers if the helper spring will not rest down on top of the vehicle's springs. The helper spring U-bolts will do the same job as the factory keepers after tightening.
NOTE: The short leaf assembly will mount on the front and the long leaf assembly will mount on the rear of the vehicle leaf springs. The end where both leaves are clamped together mount toward the axle as close as possible without making contact.
3. Install the U-bolts on the accessory springs. Install the crossbars, washers and nuts. Tighten the U-bolts on the accessory spring. Double nut this U-bolt. The shorter U-bolts mount at the axle and the longer U-bolts mount at the spring ends to allow for adjustment.
4. Install the crossbars, washers and nuts on the end U-bolts. Tighten only until enough threads show through to install the lock nut.
5. To adjust the helper spring for more load capacity, remove the lock nut from the end and draw the U-bolt tighter. Be sure to double nut after each adjustment made.
6. Bounce the vehicle and check for clearance on all undercarriage components. Check and see that all wiring, brake and fuel lines are free and clear of this installation.
7. Recheck your installation. Are all the lock nuts installed? Are the U-bolts closest to the axle drawn down completely tight? After on week of driving recheck your installation, check to see that the helper springs are tight and have not shifted.

ATTENTION INSTALLER: BE SURE THAT THE CUSTOMER RECEIVES THIS INSTRUCTION SHEET, ALL IMORTANT NOTE CARDS AND THE WARRANTY FORM

PARTS LIST

KIT # 1565 NISSAN FRONTIER, HARDBODY

PART #	QTY	DESCRIPTION
20101517	2	SINGLE LEAF .323" X 2-1/4" X 14-1/2" (FRONT)
20191516	2	2-LEAF PACK .323" X 2-1/4" X 14-1/2" (REAR)
118000390	2	(1/2" X 2-5/8" X 4-5/8") SQUARE U-BOLT
118000066	6	(1/2" X 2-5/8" X 3-3/4") SQUARE U-BOLT
112070068	8	CROSSBAR
BG-22	2	SMALL PARTS BAG (125000022)
102520043	8	(1/2") FLAT WASHER
105521044	16	(1/2") HEX NUT
135000223	1	INSTRUCTION SHEET (R-223)