



146

RECEIVER HITCH

Hyundai Veracruz

2007 & Up

INSTALLATION INSTRUCTIONS

1. Check all parts. Read and understand instructions completely before beginning installation.

Parts List:

1) Center Section

2) Hangers

6) 10mm - 1.25 x 40mm Hex Bolts

6) 10mm Lock Washers

6) 10mm HD Flat Washers

6) 14mm - 2.00 x 40mm Hex Bolts

6) 14mm Lock Washers

6) 14mm - 2.00 Hex Nuts

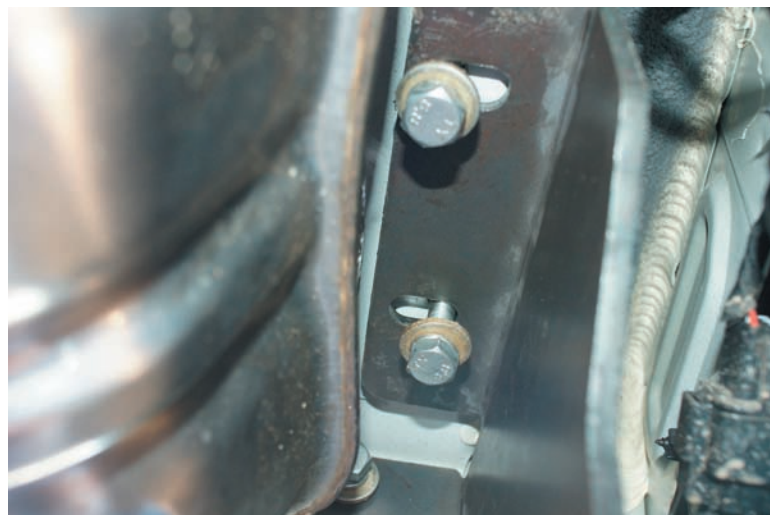
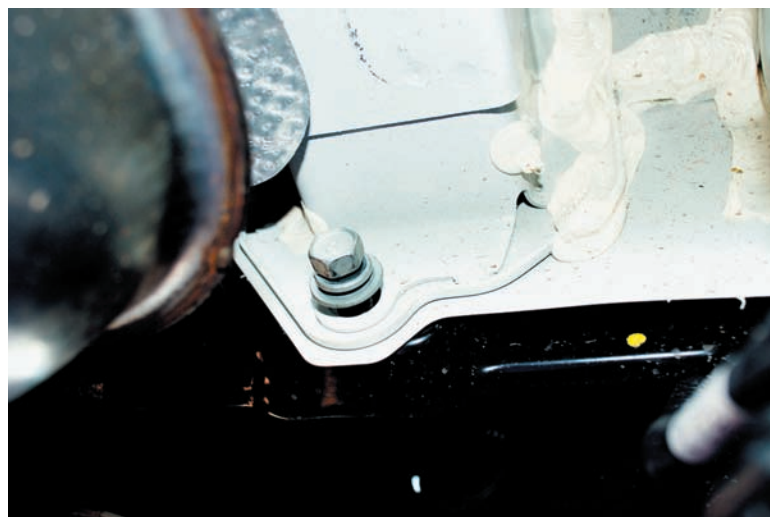
2. Remove the tow hooks if there are any present. At the end of the frame rails there is a bumper mounting flange. Remove the lower bolts just to the inside of each frame rail.

3. Return the removed parts to the customer.

4. If there is any debris on the frame rails, or in the weld nuts in the frame rails, clean the weldnuts and frame rails. The best way to clean the weldnuts is to carefully run a 10mm - 1.25 tap into each weldnut with a small amount of lubricant. The bolts should screw into each weldnut without binding.

5. Raise the hanger into position and secure to the frame rail with two 10mm - 1.25 x 40mm hex bolts, 10mm lock washers, and HD flat washers. Use one 10mm - 1.25 x 40mm hex bolt, 10mm lock washer, and HD flat washer to secure to the bumper mount flange. Leave the hanger loose.

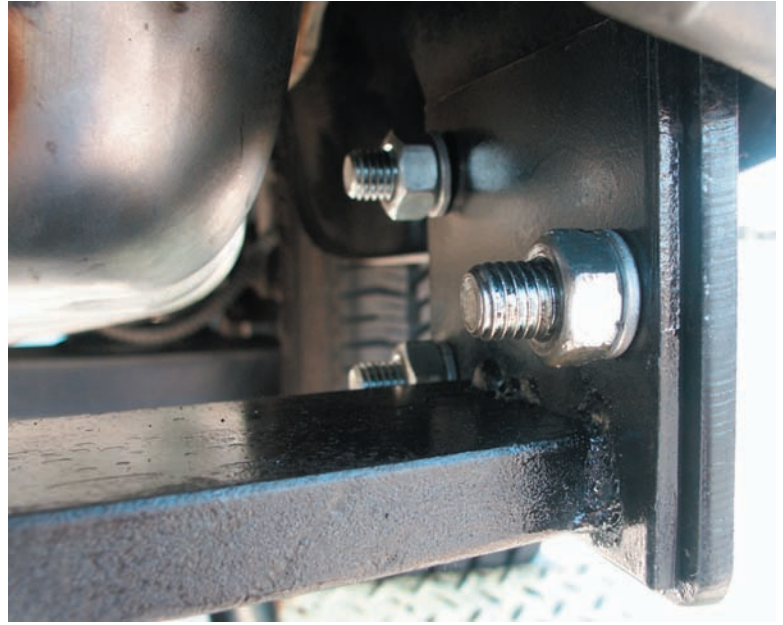
6. Install the other hanger the same way.



7. **Slip** the center section in-between the two hangers. Secure with three 14mm - 2.00 x 40mm hex bolts on each side, 14mm lock washers, and 14mm - 2.00 hex nuts. Snug all the 14mm bolts.

8. **Snug** the hanger bolts.

9. **Torque** all bolts and nuts. Starting with the 10mm bolts on the hangers to 38 ft/lbs.. The 14mm bolts to 100 ft/lbs.. Use a torque wrench.



GROSS LOAD		
HITCH TYPE	MAX TRL WT (LB)	MAX TONGUE WT (LB)
Not to be used as a weight distribution Hitch		
WEIGHT CARRYING	4,000	400

Periodically check this receiver hitch to ensure that all bolts are tight and all components sound.

Do not exceed vehicle manufacturer's recommended towing capacity

The manufacturer warrants this product to be free of defects in material or workmanship at the time of retail purchase by the original purchaser. If the product is found to be defective, the manufacturer may repair or replace the product, at its option, when product is returned, prepaid, with proof of purchase to the manufacturer. Alteration to, misuse of, or improper installation of product voids this warranty. Manufacturer's liability is limited to repair or replacement of products found to be defective, and specifically excludes liability for incidental or consequential loss or damage.

Quality S Manufacturing, Inc., Phoenix, AZ