



139

RECEIVER HITCH

Honda Accord

2008 & Up

INSTALLATION INSTRUCTIONS

Do Not use with a Weight Distribution Hitch.

1. **Check** all parts. **Read and understand** instructions completely before beginning installation. Clean the rib under the spare tire well. **Always** use eye protection when drilling.

Parts List:

- | | | |
|--|--|---|
| 1) Hitch | 4) $\frac{3}{8}$ " - 16 Hex Nuts | 1) $\frac{3}{4}$ " Lock Washer |
| 2) $\frac{3}{8}$ " X 2 $\frac{3}{8}$ " U-Bolts | 6) $\frac{3}{8}$ " X 2" Fender Washers | 1) $\frac{3}{4}$ " - 10 Hex Nut |
| 4) $\frac{3}{8}$ " HD Flat Washers | 1) $\frac{3}{4}$ " - 10 X 4 $\frac{1}{2}$ " Hex Bolt | 2) 2" X $\frac{15}{16}$ " Square Tube Spacers |
| 4) $\frac{3}{8}$ " Lock Washers | 2) $\frac{3}{4}$ " Flat Washer | |

2. **Take** the $\frac{3}{8}$ " X 2 $\frac{3}{8}$ " U-Bolt. Center one leg in the outside holes in the rib, under the spare tire well. Position the other leg to the inside of the holes. Mark where the holes need to be in the rib for the other legs of the U-bolt.



3. **Where** you marked for the holes, you need to drill a $\frac{5}{8}$ " hole. Start with a smaller drill bit, possibly a $\frac{1}{8}$ " - $\frac{1}{4}$ " drill bit. Then drill the $\frac{5}{8}$ " hole with a Silver and Deming drill bit with a $\frac{1}{2}$ " shank. (They are available at most hardware stores or industrial supply centers.)

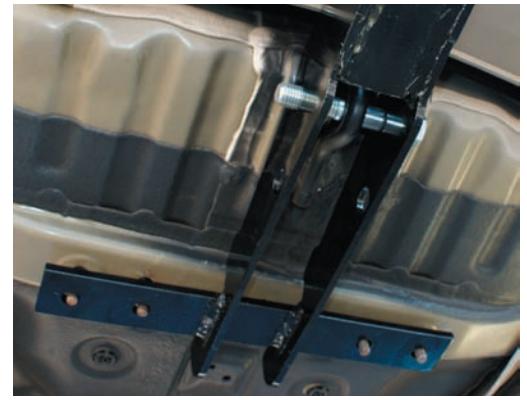
Note: Take care not to drill into the spare tire well



4. **Install** the U-bolts by slipping the bolts through the original holes and out the holes you just drilled.



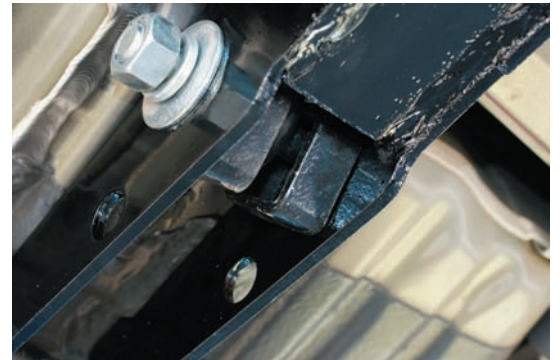
5. **Raise** the hitch over the U-bolts, and slip the $\frac{3}{4}$ " bolt through the hitch and the tow loop to support the hitch while you work with the $\frac{3}{8}$ " U-bolts, as shown in the picture.



6. **Slip** two $\frac{3}{8}$ " x 2" fender washers in-between the hitch and the stiffener, with the inside leg of the $\frac{3}{8}$ " U-bolt going through the washers. Then slip one $\frac{3}{8}$ " x 2" fender washer in-between the hitch and stiffener, with the outside leg of the $\frac{3}{8}$ " U-bolt going through the washer. Do the other side the same way. Now put a $\frac{3}{8}$ " HD flat washer, $\frac{3}{8}$ " lock washer and $\frac{3}{8}$ " nut on each leg of the U-bolts, as shown in the picture. Just finger tight on all the nuts.



7. **Hold** the hitch up and slip the $\frac{3}{4}$ " bolt out, and put a $\frac{3}{4}$ " flat washer on the bolt. Then slide the bolt back into the hitch, putting a 2" x $\frac{15}{16}$ " Square tube spacer on each side of the tow loop. Now put the $\frac{3}{4}$ " flat washer, $\frac{3}{4}$ " lock washer, and $\frac{3}{4}$ " hex nut on the bolt, as shown in the picture. Snug all the nuts and bolts.



8. **Torque** all bolts. The $\frac{3}{8}$ " nuts to 30 ft/lbs.. When torquing the U-bolts be very careful to bring the torque up evenly on all the nuts a little at a time. Torque the $\frac{3}{4}$ " bolt to 150 ft/lbs. Torque the $\frac{3}{4}$ " bolt from both sides.



Warning: All non-trailer loads must be supported by auxiliary stabilizing straps. If you do not properly support non-trailer loads it will void the warranty.

Do not use with a weight distribution hitch.

Periodically check this receiver hitch to ensure that all bolts are tight and all components sound.

Do not exceed vehicle manufacturer's recommended towing capacity

GROSS LOAD		
HITCH TYPE	MAX TRL WT (LB)	MAX TONGUE WT (LB)
Not to be used with a weight distribution Hitch		
WEIGHT CARRYING	2,000	200

The manufacturer warrants this product to be free of defects in material or workmanship at the time of retail purchase by the original purchaser. If the product is found to be defective, the manufacturer may repair or replace the product, at its option, when product is returned, prepaid, with proof of purchase to the manufacturer. Alteration to, misuse of, or improper installation of product voids this warranty. Manufacturers liability is limited to repair or replacement of products found to be defective, and specifically excludes liability for incidental or consequential loss or damage.

Quality S Manufacturing, Inc., Phoenix, AZ