



138

RECEIVER HITCH

Honda CR-V

2007 & Up

INSTALLATION INSTRUCTIONS

1. **Check** all parts. **Read and understand** instructions completely before beginning installation. Clean the under side of the frame. Clean out the weld nuts in the frame.

Parts List:

2) Hitch Hangers

1) Hitch Center Section

6) 10mm - 1.25 x 40mm Hex Bolts

6) 10mm Lockwashers

6) $\frac{3}{8}$ " USS Flatwashers

2) 2" x $\frac{15}{16}$ " Sq. Tube Spacers

6) 14mm - 2.0 x 40mm Hex Bolts

6) 14mm Lock Washers

6) 14mm - 2.0 Hex Nuts

1) $\frac{3}{4}$ " - 10 x 4 $\frac{1}{2}$ " Hex Bolt

2) $\frac{3}{4}$ " Flat Washers

1) $\frac{3}{4}$ " Lock Washer

1) $\frac{3}{4}$ " - 10 Hex Nut

2. **Lower** the muffler by slipping the two rubber hangers off their pins. To make this easier, put a small amount of lube on each pin.



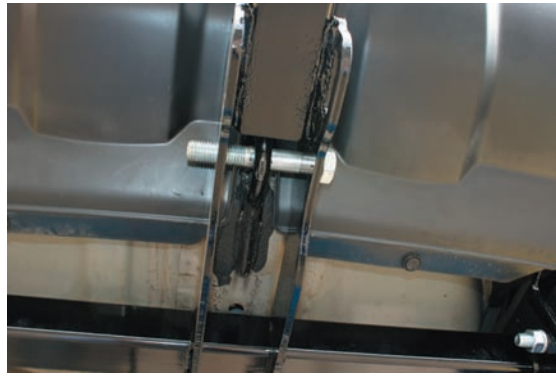
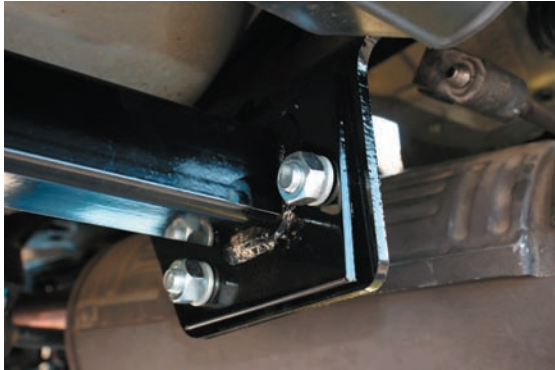
3. **Clean** the underside of the frame rails of any debris. You will also need to clean the 10mm - 1.25 weldnuts. Check by screwing the 10mm - 1.25 bolt in by hand. If it does not go in easily, you will need to clean the weldnut better. The best way to do that is to use a 10mm - 1.25 tap with a small amount of lube. Run the tap through the weldnut carefully.



4. **Lift** the hangers into place and secure them with six 10mm - 1.25 hex bolts, six 10mm lock washers, and the $\frac{3}{8}$ " flat washers. Start the bolts by hand.



5. **Snug** the bolts just finger tight.
6. **Lift** the center section into place and slip the $\frac{3}{4}$ " bolt through the $\frac{7}{8}$ " hole and the tow loop.
7. **Secure** the center section to the hangers with the six 14mm - 2.00 x 40mm hex bolts, six 14mm lock washers, and six 14mm - 2.00 hex nuts.



8. **Snug** just finger tight.
9. **Slip** the $\frac{3}{4}$ " bolt out, and put a $\frac{3}{4}$ " flat washer on it. Slip the $\frac{3}{4}$ " bolt back into the $\frac{7}{8}$ " hole, through the 2" x $\frac{15}{16}$ " square tube spacer, through the tow loop, and through the other 2" x $\frac{15}{16}$ " square tube spacer. Secure with another $\frac{3}{4}$ " flat washer, lock washer, and $\frac{3}{4}$ " hex nut.
10. **Snug** all the bolts.
11. **Torque** all the bolts. Start with the 14mm bolts. Torque to 100 ft/lbs. Then do the 10mm bolts to 38 ft/lbs.. Torque the $\frac{3}{4}$ " bolt to 150 ft/lbs. Torque the $\frac{3}{4}$ " bolt from both sides.



GROSS LOAD

HITCH TYPE	MAX TRL WT (LB)	MAX TONGUE WT (LB)
Not to be used with a weight distribution Hitch		
WEIGHT CARRYING	3,500	350

**Do not exceed vehicle
manufacturer's recommended towing capacity**

Periodically check this receiver hitch to ensure
that all bolts are tight and all components sound.

The manufacturer warrants this product to be free of defects in material or workmanship at the time of retail purchase by the original purchaser. If the product is found to be defective, the manufacturer may repair or replace the product, at its option, when product is returned, prepaid, with proof of purchase to the manufacturer. Alteration to, misuse of, or improper installation of product voids this warranty. Manufacturer's liability is limited to repair or replacement of products found to be defective, and specifically excludes liability for incidental or consequential loss or damage.

Quality S Manufacturing, Inc., Phoenix, AZ