



136

RECEIVER HITCH

Ford Edge / Lincoln MKX

2007 & Up

INSTALLATION INSTRUCTIONS

1. **Check** all parts. **Read and understand** instructions completely before beginning installation. Clean the under side of the frame.

- 1) Center Section
- 2) Hitch Hangers
- 6) 1/2" - 13 x 2" Carriage Bolts
- 6) 1/2" Lockwashers

- 6) 1/2" - 13 Hex Nuts
- 6) 1/2" HD Flatwasher
- 6) 1/4" x 2" x 2 5/8" Sq. Hole Spacers
- 6) 14mm - 2.00 x 40mm Hex Bolts

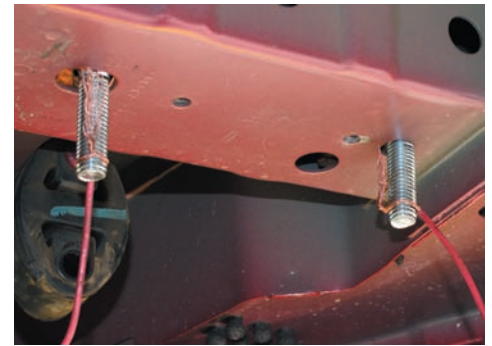
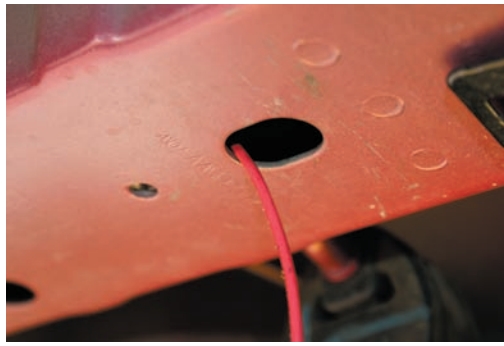
- 6) 14mm - 2.00 Hex Nuts
- 6) 14mm Lockwashers

2. **To make** installation easier, lower the mufflers. Slip the three rear most exhaust hangers loose from the muffler.

3. **Remove** both heat shields. There are three 8mm bolts in each shield holding them in place, and one plastic push fastener.

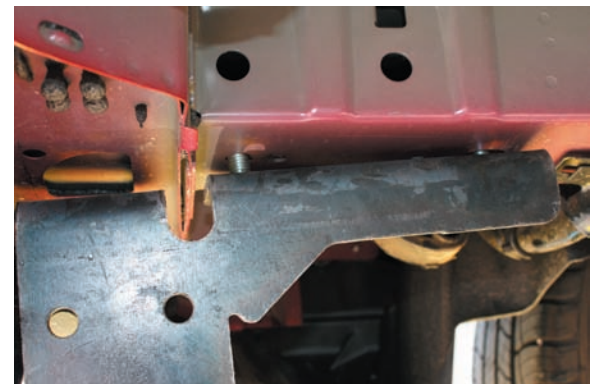
4. **When** you have the shields removed, trim each as shown in the picture with the tin snips.

5. **Fish wire** the two forward 1/2" - 13 x 2" carriage bolts and spacers as shown in the pictures below, through the rear of the frame rails on both sides. Leave the wire attached to the bolts.

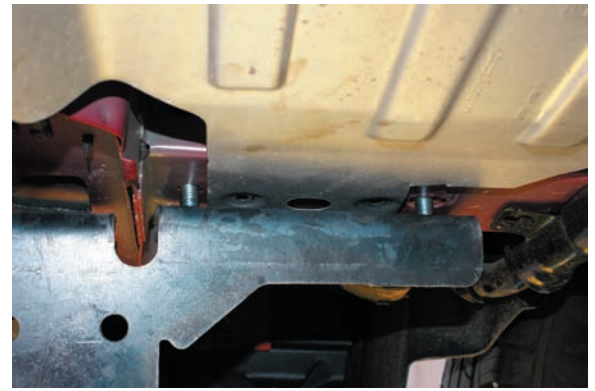


6. **Raise** the hitch hanger over the fish wire and 1/2" bolts. Remove the fish wire on the rear bolt. Put a 1/2" nut on the bolt to hold the hanger in place. Remove the fish wire on the forward bolt and put a 1/2" heavy duty flat washer, 1/2" lock washer, and 1/2" - 13 nut on the bolt loosely. Do the same on the rear bolt.

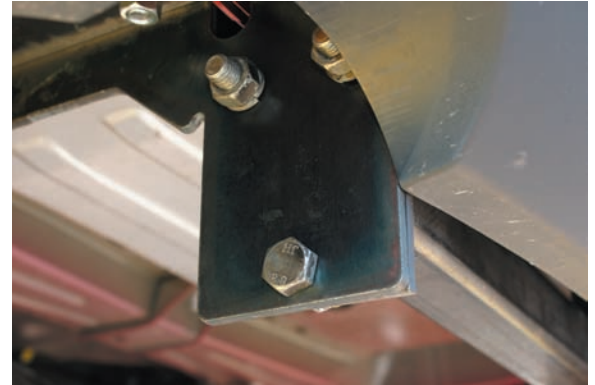
Do the hanger on the other side the same way.



7. **Reattach** the heat shields by slipping the heat shields between the frame and the hitch hanger, then push the plastic push fastener in place. Use the one 8mm bolt towards the center of the vehicle to secure the shield. The outside of the heat shield will be sandwiched between the frame and the hanger. Finger tighten the hanger bolts.



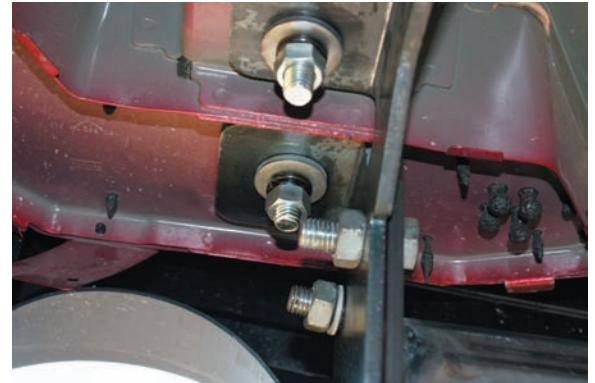
8. **Slip** the center section between the hangers and secure with three 14mm - 2.00 bolts, 14mm lock washers, and 14mm nut as shown on both sides.



9. **Snug** all the bolts starting with the 14mm, then the 1/2" bolts.

10. **Using** the hitch hangers as a template, drill 5/8" holes in the frame rails for the rear bolts on both sides. **(These bolts are not optional, they are necessary.)**

11. **Fishwire** a 1/2" - 13 x 2" carriage bolt and spacer as before into both holes.



12. **Secure** with a 1/2" heavy duty flat washer, 1/2" lock washer, and 1/2" - 13 nut.

13. **Torque** the 1/2" bolts to 75 ft/lbs, and the 14mm bolts to 100 ft/lbs.

14. **Reinstall** the exhaust hangers you removed in the beginning.

GROSS LOAD

HITCH TYPE	MAX TRL WT (LB)	MAX TONGUE WT (LB)
Not to be used as a weight distribution Hitch		
WEIGHT CARRYING	4,000	400

Do not exceed vehicle manufacturer's recommended towing capacity

Periodically check this receiver hitch to ensure that all bolts are tight and all components sound.

The manufacturer warrants this product to be free of defects in material or workmanship at the time of retail purchase by the original purchaser. If the product is found to be defective, the manufacturer may repair or replace the product, at its option, when product is returned, prepaid, with proof of purchase to the manufacturer. Alteration to, misuse of, or improper installation of product voids this warranty. Manufacturer's liability is limited to repair or replacement of products found to be defective, and specifically excludes liability for incidental or consequential loss or damage.

Quality S Manufacturing, Inc., Phoenix, AZ